

# OmniAccess Stellar LBS - lokācijas pakalpojumi

## Tīklu pārvaldības platformas

# OmniAccess Stellar LBS



# LBS offer

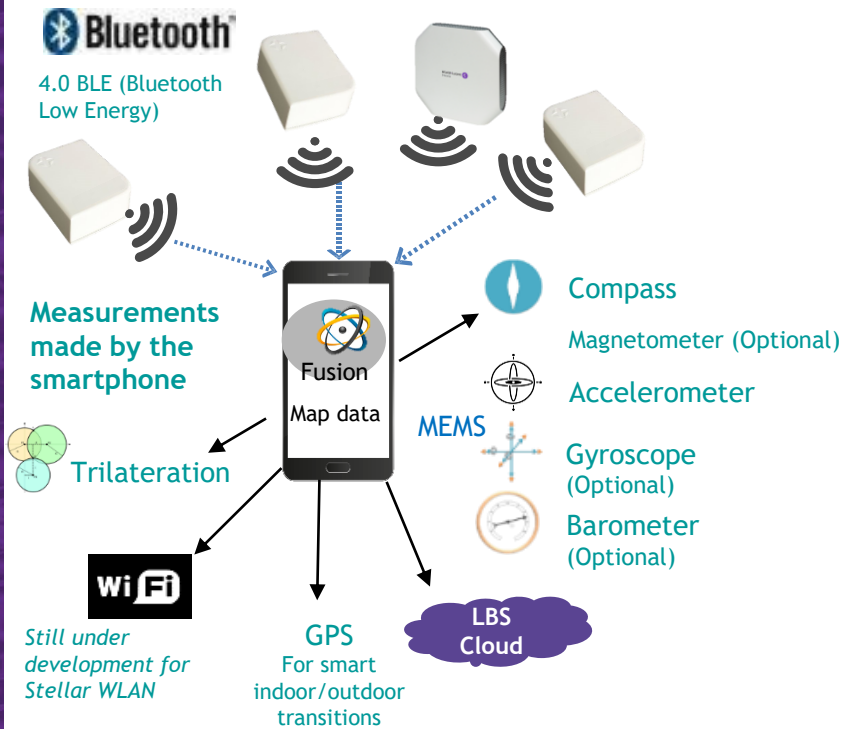
- Multiple capabilities to meet your needs

Accuracy  
Scalability  
Ease of use

Enhance the user experience  
Engage

Boost revenues  
Reduce costs

Measure  
Analyze  
Optimize



**Geopositioning & Wayfinding**  
Give location information to the user.



**Geofencing Notifications**  
(used for proximity marketing, object-oriented information, etc.)



**Analytics**  
Geofencing based. In real time/deferred time.

# LBS solution components

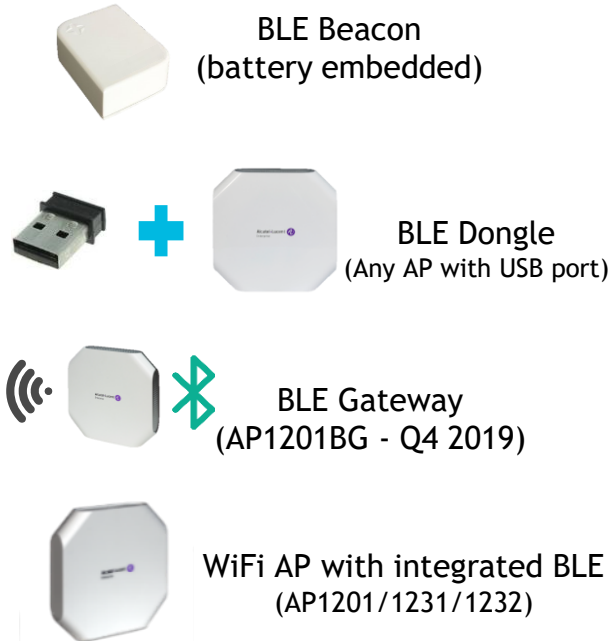
Hardware + Mobile App Software Integration + Manager

OmniAccess®  
STELLAR  
— LBS —

## Beacons Infrastructure

## Location SDK

## Management



### Stellar LBS Cloud Manager

- Beacons monitoring
- Define/manage geonotifications
- Analytics



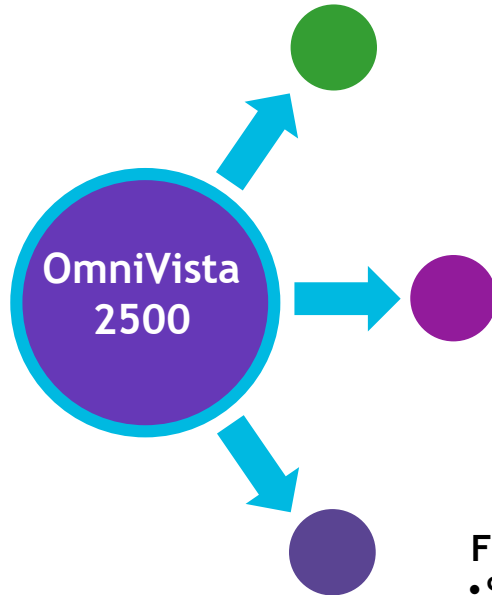
### LBS Installer



# Service Platform



# OmniVista® 2500



## Keystone of Our Technology & Solutions

- Unified Access
- Network On Demand
- Analytics & App Visibility
- SDN

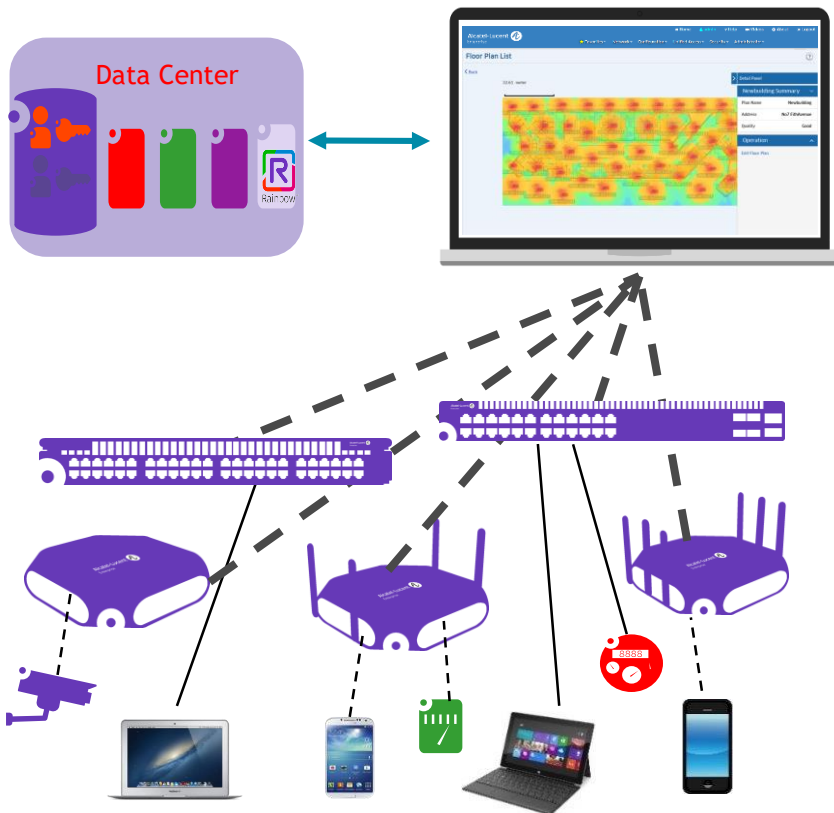
## More than NMS

- KPIs, Trending, Reporting, App Visibility and more
- Service Management, Provisioning automation

## Fully Rebuilt from the Ground Up

- Scale, Multi-Tenancy, Performance
- Web 2.0 - Any Device
- Sleek & powerful sales tool - leverage E-Demo

# OmniVista® 2500 - Unified network management



- Single LAN and WLAN management system
  - Wired & Radio network topology maps
  - Centralized WiFi and LAN provisioning
- Unified Policy Access Manager - UPAM server
  - Users and Devices (IoT) directory services
  - Bring Your Own Device management
- Integrated Captive Portal for WiFi & LAN
  - For public/hot spot or corporate networks
  - With rich guest management options

- Simplified IT operations
- Improved network security
- Better user experience

# OV2500 On-Premises vs OV2500 Cirrus

## On-Premises



- Ongoing Costs**
- Apply patches, upgrades
  - Downtime
  - Performance tuning
  - Rewrite customizations
  - Rewrite integrations
  - Upgrade dependent applications
  - Ongoing burden on IT (hardware)
  - Maintain/upgrade network
  - Maintain/upgrade security
  - Maintain/upgrade database

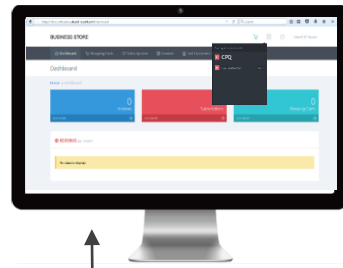
## Cloud Computing



- Ongoing Costs**
- Subscription fees
  - Training
  - Configuration
  - System Administration



# Cloud Network Management – OV modes



Subscription thru ALE Business Store

If active subscription



01

## Freemium

Perpetual Admin Management, PALM & Device Inventory applications free of charge



02

## Demo

90 Days trial period (not renewable) for limited quantity of devices, BYOD & Guest Access licenses without restricted capabilities.

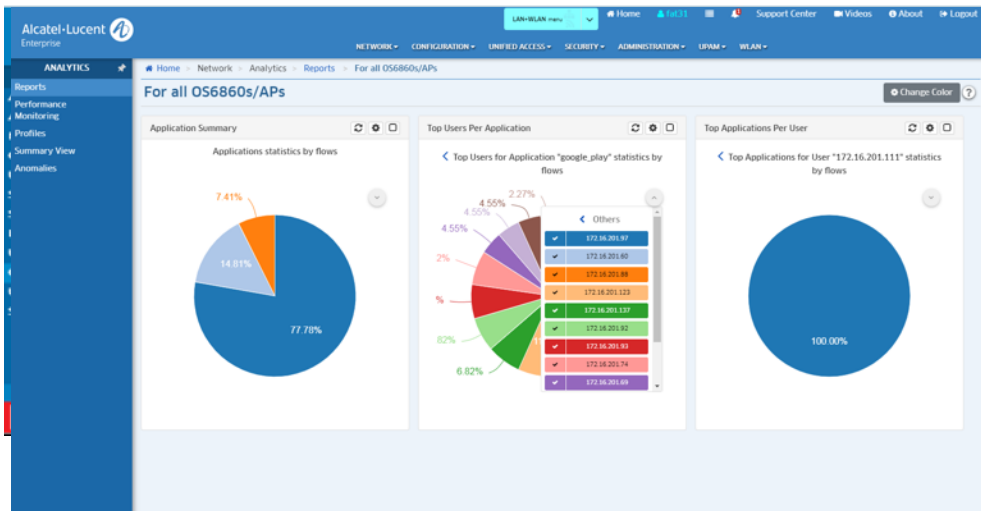


03

## Premium

Commercial subscription priced per LAN or WLAN device and BYOD / Guest Access priced per user for a fixed/renewed duration (1, 3 or 5Y)

# Omnivista improvements



- ✓ New SSID app now supporting multiple SSIDs with different config but same ESSID
- ✓ Collect log for support in OV
- ✓ Mesh topology
- ✓ Application visibility improvement
- ✓ IPV6 client list support

# Datasheets

## Management Platform

- OmniVista 2500 [datasheet](#)
- OmniVista Cirrus [datasheet](#)

## LAN Switches

- OmniSwitch 2200 SMB WebSmart switch: [datasheet](#)
- OmniSwitch 6350 SMB LAN switch: [datasheet](#)
- OmniSwitch 6450 Stackable Gigabit Ethernet LAN switch: general [datasheet](#) , 10 port [datasheet](#)
- OmniSwitch 6465 Hardened L2+ LAN Switch [datasheet](#)
- OmniSwitch 6560 - Stackable Multigig LAN switch: [datasheet](#)
- OmniSwitch 6860 - Stackable LAN switch with multigig and DPI option [datasheet](#)
- OmniSwitch 6865 - Hardened L3 Switch [datasheet](#)
- OmniSwitch 6900 - Stackable 40G core switch [datasheet](#)
- OmniSwitch 9900 - Chassis core switch [datasheet](#)

## Stellar WLAN

- OmniAccess AP1101 SMB 802.11ac AP: [datasheet](#)
- OmniAccess AP1201 entry-level 802.11ac Wave 2 AP: [datasheet](#)
- OmniAccess Stellar AP1220 Series- High performance wave 2 AP: [datasheet](#)
- OmniAccess Stellar AP1230 Series - Ultra high performance wave 2 AP: [datasheet](#)
- OmniAccess Stellar AP1251 - Rugged wave 2 AP: [datasheet](#)

# CONTACTUS



[katrina.levita@adventus.lv](mailto:katrina.levita@adventus.lv)

[andris.laumanis@al-enterprise.com](mailto:andris.laumanis@al-enterprise.com)

## WEBSITE

[www.adventus.lv](http://www.adventus.lv)

[www.al-enterprise.com](http://www.al-enterprise.com)

Follow us on:

